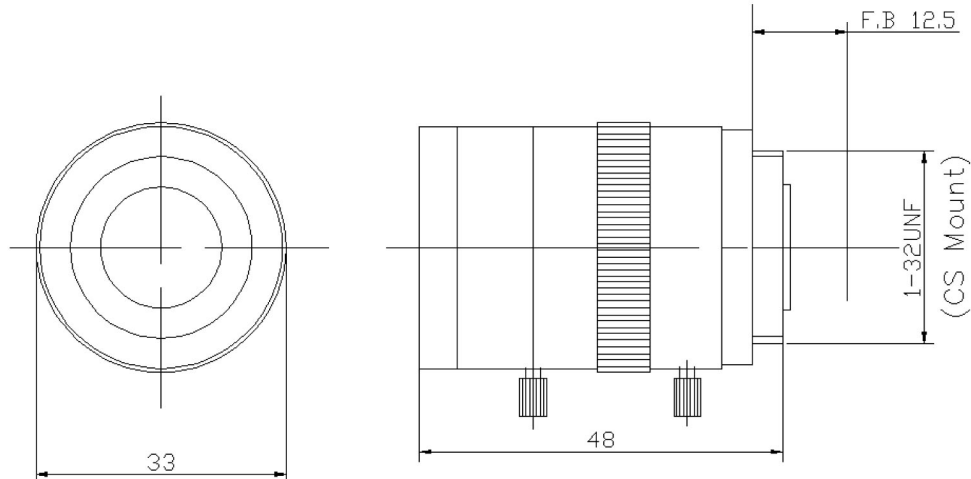




## TEK358M



SPECIFICATION		
FORMAT	1/3" $\varnothing$	
MOUNT	CS $\varnothing$	
FOCAL LENGTH	3.5-8mm $\varnothing$	
IRIS RANGE	F1.4-CLOSE $\varnothing$	
ANGLE OF VIEW (1/3" )	105° ---43.3° $\varnothing$	
M.O.D.	0.2M $\varnothing$	
BACK FOCAL LENGTH	6.72mm $\varnothing$	
FLANGE BACK LENGTH	12.5mm $\varnothing$	
DIMENSIONS	$\varnothing$ 33 $\times$ 48 (L) mm $\varnothing$	
WEIGHT	Approx. 60g $\varnothing$	
OPERATION	<IRIS> MANUAL $\varnothing$	$\varnothing$
	<FOCUS> MANUAL $\varnothing$	WITH LOCK SCREW $\varnothing$
	<ZOOM> MANUAL $\varnothing$	WITH LOCK SCREW $\varnothing$
OPERATING TEMPERATURE	-10-+50°C $\varnothing$	
Specifications are subject to change without notice. $\varnothing$		

### TEKSTAR Optical Inc.

270 KOHR RD  
 KINGS PARK, NY 11754-1237  
**Toll Free:** 888-LENS-GUY (888-536-7489)  
**Phone:** 631-663-3558  
**Toll Free Fax:** 1-888-CCTVFX1  
**Fax:** 631-269-5368  
**E-mail:** info@tekstaroptical.com  
 www.tekstaroptical.com